

Description of the turbo separators TP451/2975.02

Automatic turbo cleaning machine VD-60.2975d

Suitable for cleaning 460 x 500 l grinding oil/min. consisting of 8 Schneeberger grinding machines to separate out approx. 35 kg/24 hours of woolly chrome steel abraded particles generated by CBN grinding (clock casing). Design in accordance with our technical specifications TA 2975.02 and drawings VD-60297d, VD-60.2975d/1 and BS-60.2975d/2



3 automatic turbo centrifuges T 60 A-02

Maximum performance of each 250 l/min.

- With rotor made from an alkali-non-resistant aluminum alloy, (PH-value 6.5-9.5)
- Volume approx. 55 l
- With 11 kW drive motor
- With 2.2 kW gear motor
- With electric magnetic clutch
- Automatic gravity drop sludge discharge into
- Container sludge wagon or sludge conveyor belt
- With vibration monitoring, automatically initiates emptying of the centrifuge when exposed to severe vibrations. If the vibrations are not cancelled out by this, switches off the centrifuge while indicating a fault
- Tightly welded to housing made from sheet steel
- With 2 inspection openings, mounted on 4 anti-vibration elements
- 1 x 2" dirty coolant inlet
- 1 x R 2" dirty coolant return
- 1 x 1" clean coolant connection

3 swing check valves

Nominal width R 1" fitted ready-to-use to the centrifuge scraper

1 platform

Made from solidly and tightly welded sheet steel and sectional steel. Suitable for supporting the centrifuges

- With 200 l collection tank
- With sump
- With suspension eyelets

3 sludge wagons

Made of solidly welded sheet steel, volume about 70 l, can be moved on 2 steering and 2 trestle rollers

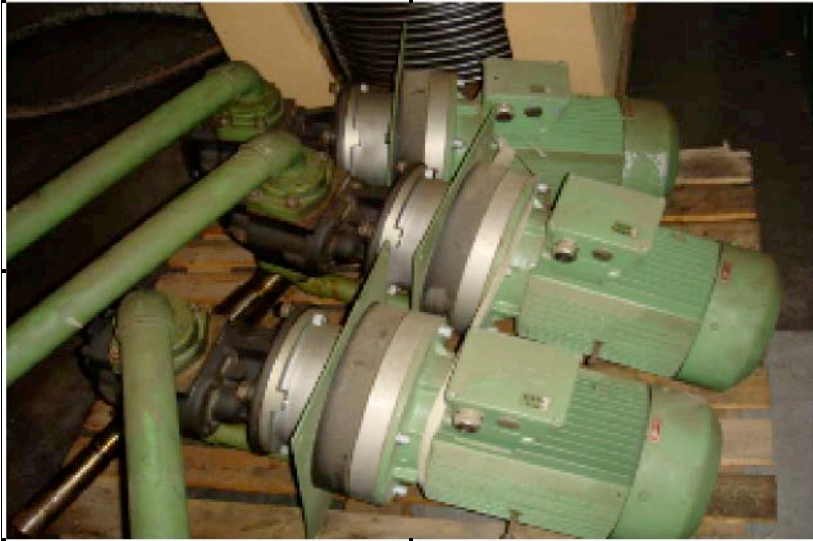


3 feeder pumps

Type TP 300

Performance approx. 280 l/min. at 0.8 bar, with 2.2 kW motor

Immersion depth 50 mm with cast iron pump wheel for aerated oil, incl. control unit in the central control cabinet



5 float switches

- 1 x Type TSS-0-100 in the collection tank to monitor levels
- 1 x Type TSS-1 W-400 in the collection tank to control the switching on/off of the return pump
- 1 x Type TSS-0-100 in the dirty oil tank to monitor levels
- 1 x Type TSS-1W-500 in the clean oil tank to indicate "Top up with grinding oil".
- 1 x Type TSS-1W-500 in the dirty oil tank, switches on centrifuge

1 dipping return cooling device NET 280-134-11 4-W

With coolant R134a, ready to use, water-cooled cooling unit with all refrigeration and electrical parts, consisting of:

- Housing made of solidly welded sheet steel and sectional steel, assembled ready to connect
- With filter mat and mesh upstream of capacitor
- With base plate measuring L x W = 1400 x 900 mm
- Fully hermetic compressor, output 9.5 kW
- Dipping stick with immersion depth F = 1000 mm
- With special evaporator made from 1.4031 stainless steel
- Special design to provide good heat exchange at a low flow rate
- Medium flow speed min. 0.2 mm/sec. at a viscosity of less than 10 mm/sec.
- Incl. control unit in the central control cabinet
- Connections made with Harting plugs



1 temperature controller

Type TR 1830

Control accuracy +/- 1 degree C

Electronic temperature controller for 3 circuits

Adjustable switching hysteresis

1. Circuit for small device

2. Circuit for large device

3. Circuit for both devices

Installed in switch cabinet ready to use

With connectivity for external over-temperature display

1 BKW switch cabinet cooler SK 180 D2V

Cooling capacity 1800 watt at 35 degrees C ambient temperature and a switch cabinet internal temperature of 35 degrees C or approx. 1500 watt at 50 degrees C ambient temperature

- Coolant R134a
 - Can be fitted to the side
 - With separate fans
 - With washable, reusable metal filter
 - With grille to redirect cold air upwards
 - With electronic control unit type 20100Z
 - Incl. noise suppression and spark quenching
 - Voltage 230 Volt 50 Hz
- Ready fitted to the control cabinet



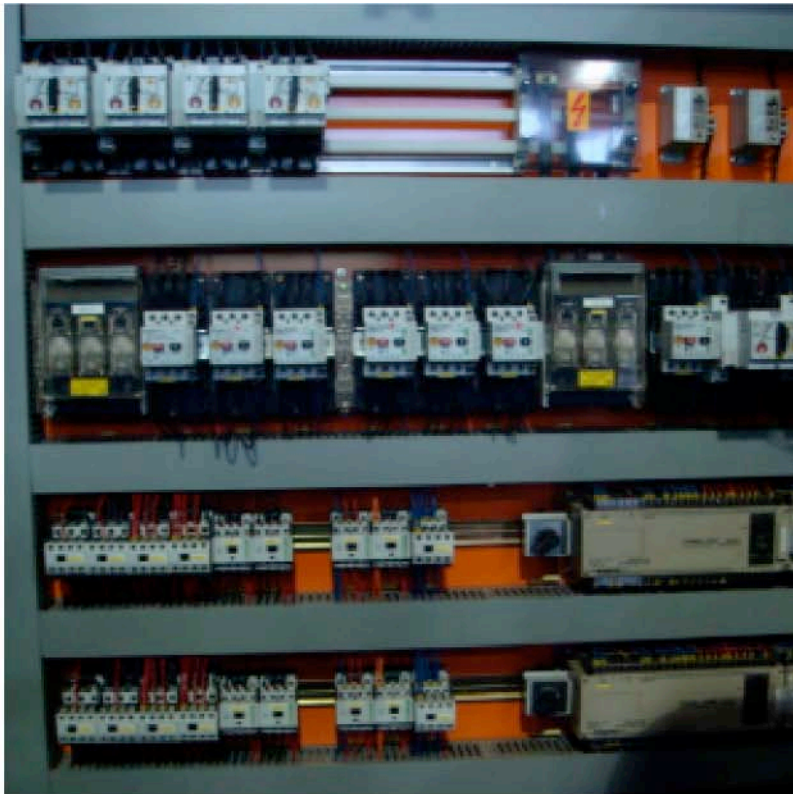
1 control unit

Equipped with all the operating controls, display lamps and switching devices required to run the machine in automatic mode

With connectivity for external operating and fault display

With programmable very small-scale control "OMRON" PLC main switch with transformer designed for final stage of completion, i.e. the later attachment or integration of

- 2 feeder pumps
- 3 supply pumps
- 1 NET 280 cooling device



Paint

Inside 2 part base coat
Outside 2 part textured enamel

Normal accessories

1 operating and maintenance manual in German with electric diagram spare parts drawings and list

Documentation

In German

The following are not included in the offer:

- Electrical main supply line to the control unit
- Electrical and mechanical link
 - Cabling and pipework of the cleaning machine to the on-site machine tool
- Assembly and commissioning of the cleaning machine on-site
- El. cabling of the machine between the control cabinet and the individual devices in cable channels laid on-site